

CNS Drugs from Fungal Genetics Research

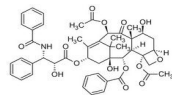


- Luminous Mind Inc. (LMI) is dedicated to developing superior and differentiated treatments for Central Nervous System disorders, including depression, PTSD, pain, anxiety, and addiction
- Although a few companies are involved in mushroom genetics research, LMI is the only company totally focused on the treatment of CNS disorders
- The establishment of our Fungal Genetics Research Program in Oregon will help LMI to pursue the enormous untapped potential in mushrooms, fungi and endophytes for drug and patented nutraceutical development

Fungi have an unparalleled record in drug discoveries

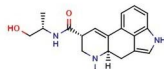
High value fungal medicines across multiple therapeutic areas

Oncology



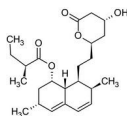
Paclitaxel

Reproductive



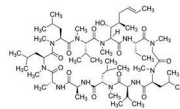
Ergometrine

Cardiovascular



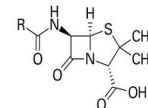
Lovastatin

Immunology



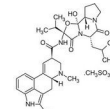
Cyclosporine

Infection



Beta-lactams

Neural



Bromocriptine

The global fungal metagenome comprises tens of millions of species...

...yet fewer than 1 in 10,000 fungi have been investigated for new drugs...

...and most fungi produce molecules that already have a physiological effect

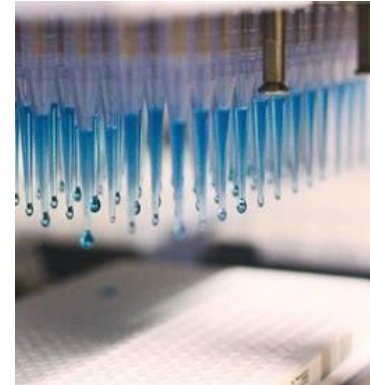
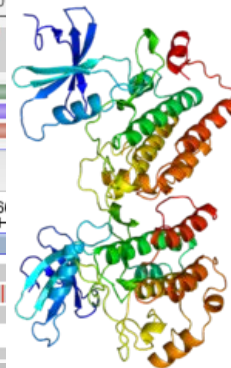
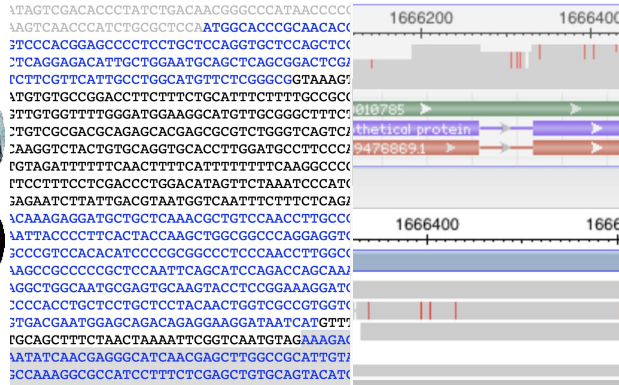
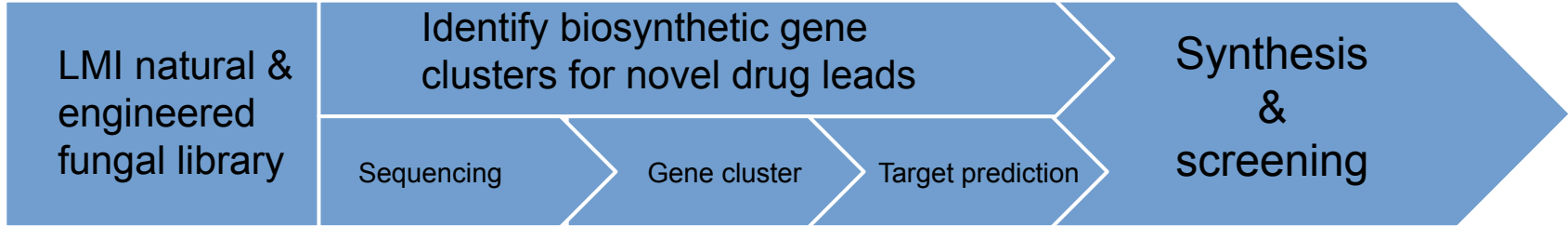
CNS indications lag behind other therapeutic areas in drug discovery

LMI's Research Activity on Genomes of Fungi



NOW	SOON	GOAL
<i>Psilocybe</i> mushrooms for therapeutic use in Oregon		
	<i>Psilocybe</i> entourage metabolites for therapy	
Mushroom nutraceutical antioxidants, cholesterol lowering sterols		
	Neurosteroids for drug leads	
		Clinical trials
Bioinformatic discovery of novel biosynthetic gene clusters		
	Genetic crosses for nutrient optimization	

LMI's pipeline, built on a fungal drug discovery platform



LMI Mycologists & Geneticists

LMI's Industry Leading Team of "drug hunting scientists"



LOUIS HERLANDS, PHD
CEO / CO-FOUNDER

Proven entrepreneur across academia, finance, and industry. Co-founded, financed or led biotech companies with an aggregate value of +\$15B.



MARCIE GLICKSMAN,
PHD
CSO CONSULTANT

30+ years developing better therapeutics for the nervous system and other areas. 8 drugs to the clinic, 2 marketed drugs, over \$2B in sales for Cephalon (Teva) & Cubist (Merck)..



DAVID BORSOOK,
PHD, MD
BRAIN SYSTEMS BIOLOGY

Pioneer, functional imaging in CNS drug development. 40+ years at Harvard. Founding Dir., Center for Pain and Brain, Boston Children's, MGH & McLean Hospitals; Founder, CSO Descartes Therapeutics.



MYLES AXTON, PHD
GENETICS RESEARCHER

As the former editor of *Nature Genetics* for 15 years, he set new standards for research in agricultural genomics and for genetics of common and rare diseases.



MICHAEL MAKI
ETHNOBOTANY - THE
SCHULTES CENTER

Director of the Richard Evans Schultes Center for Amazonian Ethnobotanical Research. Pioneer in organic crop Certification. Over 35 years' experience in renewable agriculture, mycology and agroforestry.



HADRIAN GREEN
MB, CHB, PHD
NEUROLOGY, BIOTECH

Practicing physician with a PhD in functional neural imaging, and consultant on corporate finance strategy for pharmaceuticals. Entrepreneur and inventor.



DAVID BLEAKMAN,
PHD
PHARMACOLOGY
NEUROSCIENCE

Former VP and chief scientific officer in neuroscience research at Lilly for pain/migraine and psychiatric disorders drug discovery.



ALAN JACOBSON,
PHD, MBA
MEDICINAL CHEMISTRY

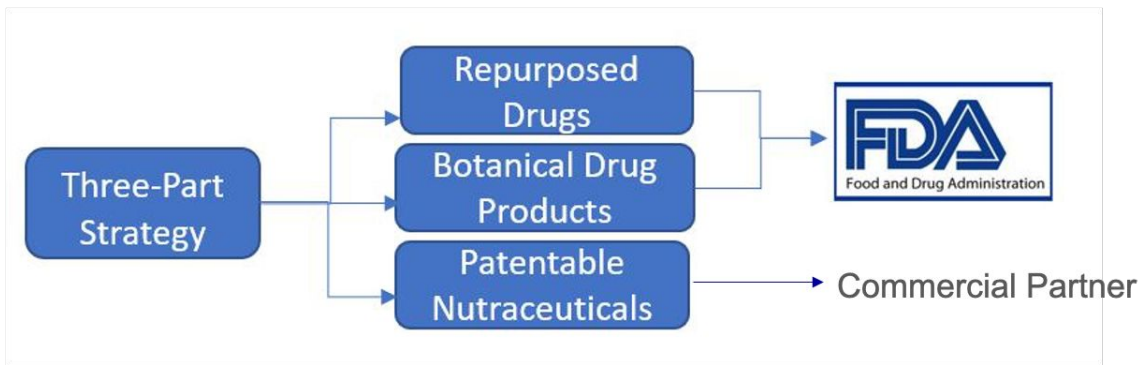
30+ years in small molecule drug discovery/development. Founded CRO Absolute Science, an effort incl. Harvard, Tufts, BU and Scripps targeting botulinum.



DAVID THALER, PHD
GENETICS

Genetics and microbiology; transdisciplinary scientist. Molecular biology, cognitive psychology & harm reduction. Associate. Prof., Rockefeller. University of Basel, Biozentrum

LMI's diverse, agile Three-Part Strategy



- In-licensing, repurposing and traditional medicine opportunities pursued for neural and psychiatric disorders to drive valuation
 - The psychoactive agents of these plants, endophytes and fungi are isolated and characterized, both chemically and pharmacologically, and used as leads in our drug discovery programs.
 - LMI is building a pipeline to include NCEs based on bioactives that have CNS, brain plasticity, and anti-inflammatory activities.
-

Genomic discovery in fungi and endophytes - A huge new field



Company	Round	Funding	Strategy
LifeMine Therapeutics	C	\$295m	Fungal genomics, AI, Synthetic biology
Hexagon Bio	B	\$116.3m	Fungal products against cancer and infection. Database of metabolites and protein targets.
21 st .BIO	VC series	EU86m	Expression in fungi, yeast, bacteria. Novozyme technology for expression and testing natural molecules at scale
Indigo Ag	F	\$1.2bn	Crop protection. Identified culture mixes that promote seed germination and plant pathogen resistance

LMI will bring these discoveries into CNS therapy

Fungal Genetics Research Program



For more information or to schedule a presentation please contact:

Myles Axton, PhD
Chief Genetics Researcher
P: 800-816-9630 x705
M: 845-806-1261
MAxton@LuminousMindInc.com

How: Genetics and biochemical genetics of *Psilocybe cubensis* and other mushrooms. LMI uniquely skilled and positioned.

Where: Immediately establish lab in Oregon with the legalization of *Psilocybe* therapy and its related mushroom communities.

When: Time critical. Potential competitors waking up. Rapid high quality work to establish LMI as pioneer.

Amount: Target of \$1-\$3 million. Special Investment Offering in [Luminous Mind Inc.](#) via a [Convertible Promissory Note](#). Minimum investment \$50K.